

For Lease

1301 MUNICIPAL WAY

Grapevine, TX 76051



#### OFFERING SUMMARY

Lease Rate:	\$21.00 SF/yr (NNN)
Building Size:	29,163 SF
Available SF:	1,000-10,568 SF

#### PROPERTY OVERVIEW

Beautiful and well maintained 2 story, class A office building. Located in the heart of Grapevine with easy access to State Hwy 121, 114, and 360. Minutes to DFW Airport and near the Grapevine TEXRail Terminal.

Conveniently located off Main Street and State Hwy 114, across the street from Bob's Steak and Chop House, Winewood and Mi Dia Mexican.



#### PROPERTY HIGHLIGHTS

- Suite 200 - 1,000-10,568 SF (Divisible)
- Potential for 15,017 SF (Full 2nd Floor)
- 3.2 parking spaces per 1,000 SF (surface and covered)
- Very strong sub-market with excellent demographics
- Walking distance to hotels, restaurants, the REC and downtown Grapevine

Presented by

**Cincha Kostman**

Kostman@HudsonPeters.com

214.389.3665

**Elizabeth Ocando, CCIM**

ocando@hudsonpeters.com

214.389.3666

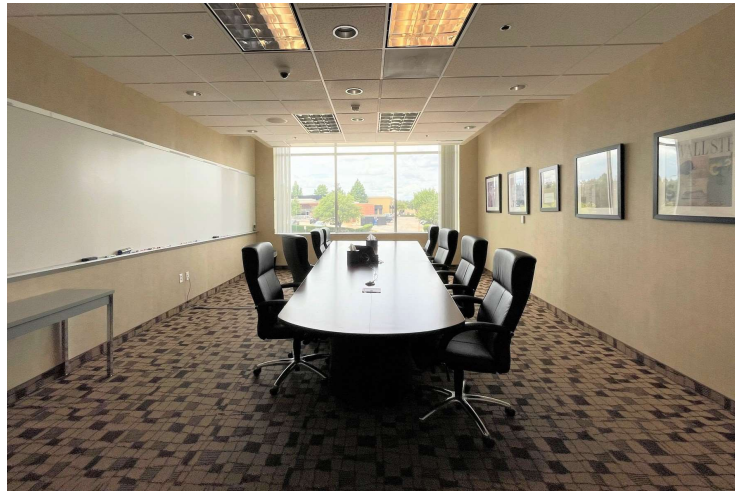
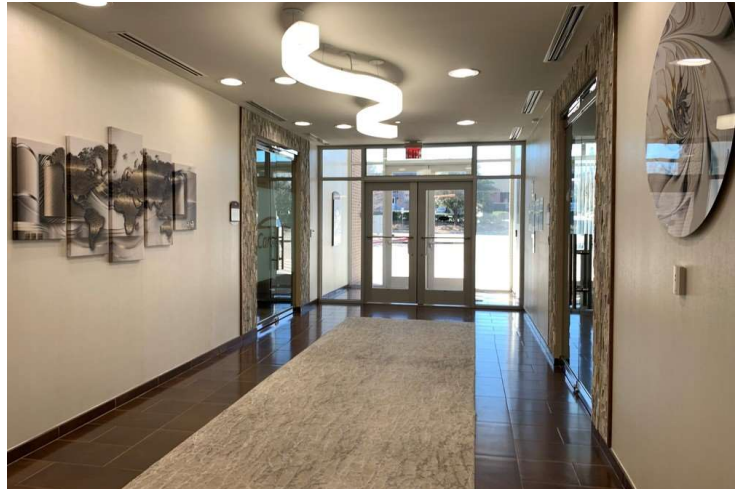


The information contained herein was obtained from sources believed reliable; however, Hudson Peters Commercial LLC makes no guarantees, warranties or representation as to the completeness or accuracy thereof. The presentation of properties and pricing is submitted subject to errors, omissions, change of price or condition prior to sale or lease or withdrawal without notice. Unless expressly stated otherwise, nothing contained in this message should be construed as a digital or electronic signature, nor is it intended to reflect an intention to make an agreement by electronic means.



For Lease

**1301 MUNICIPAL WAY**  
Grapevine, TX 76051



Presented by

**Cincha Kostman**

Kostman@HudsonPeters.com

214.389.3665

**Elizabeth Ocando, CCIM**

ocando@hudsonpeters.com

214.389.3666



The information contained herein was obtained from sources believed reliable; however, Hudson Peters Commercial LLC makes no guarantees, warranties or representation as to the completeness or accuracy thereof. The presentation of properties and pricing is submitted subject to errors, omissions, change of price or condition prior to sale or lease or withdrawal without notice. Unless expressly stated otherwise, nothing contained in this message should be construed as a digital or electronic signature, nor is it intended to reflect an intention to make an agreement by electronic means.



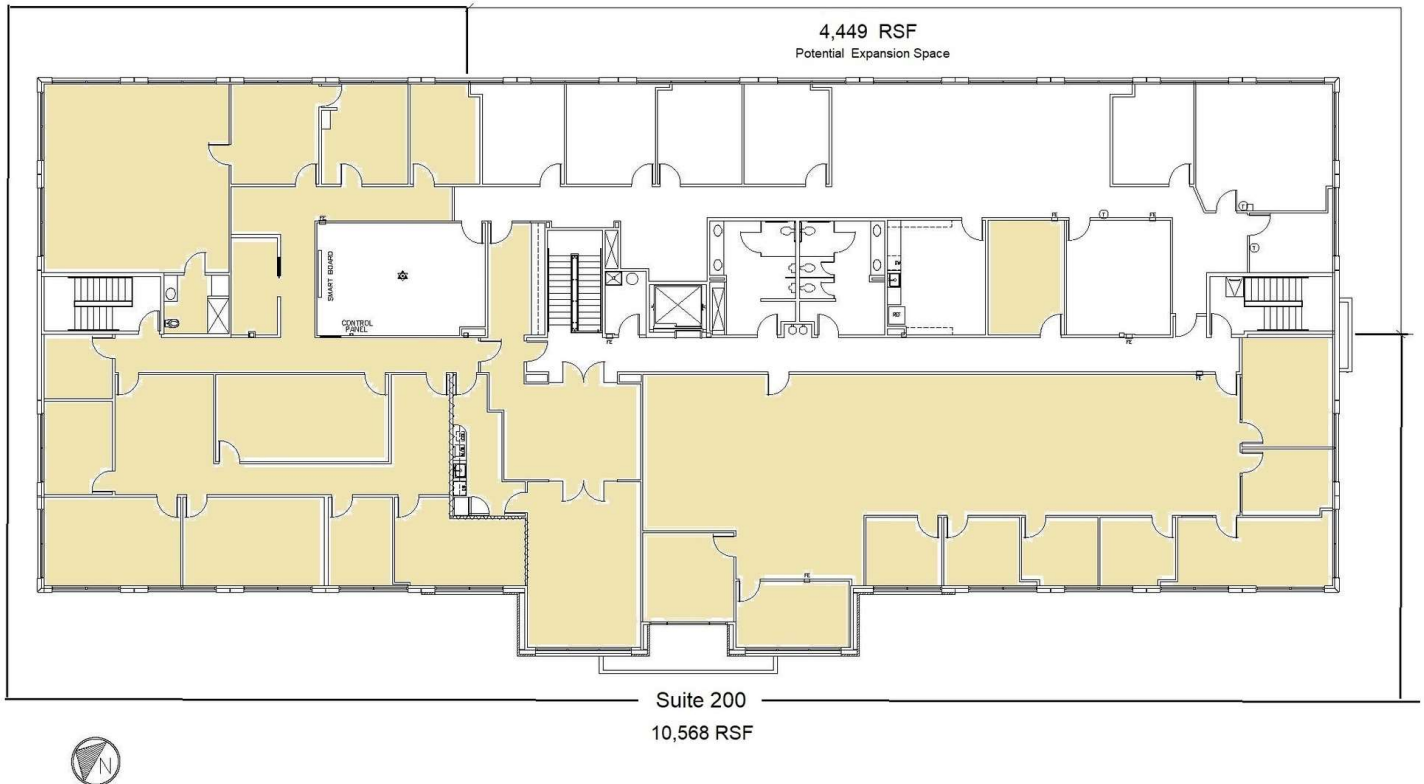
For Lease

1301 MUNICIPAL WAY

Grapevine, TX 76051

Expansion Space

1301 Municipal Way, Grapevine, TX 76051  
Suite 200 - Up to 10,568 RSF Available  
(Potential for Up to 15,017 RSF-Full Second Floor)



Presented by

**Cincha Kostman**

Kostman@HudsonPeters.com

214.389.3665

**Elizabeth Ocando, CCIM**

ocando@hudsonpeters.com

214.389.3666



The information contained herein was obtained from sources believed reliable; however, Hudson Peters Commercial LLC makes no guarantees, warranties or representation as to the completeness or accuracy thereof. The presentation of properties and pricing is submitted subject to errors, omissions, change of price or condition prior to sale or lease or withdrawal without notice. Unless expressly stated otherwise, nothing contained in this message should be construed as a digital or electronic signature, nor is it intended to reflect an intention to make an agreement by electronic means.

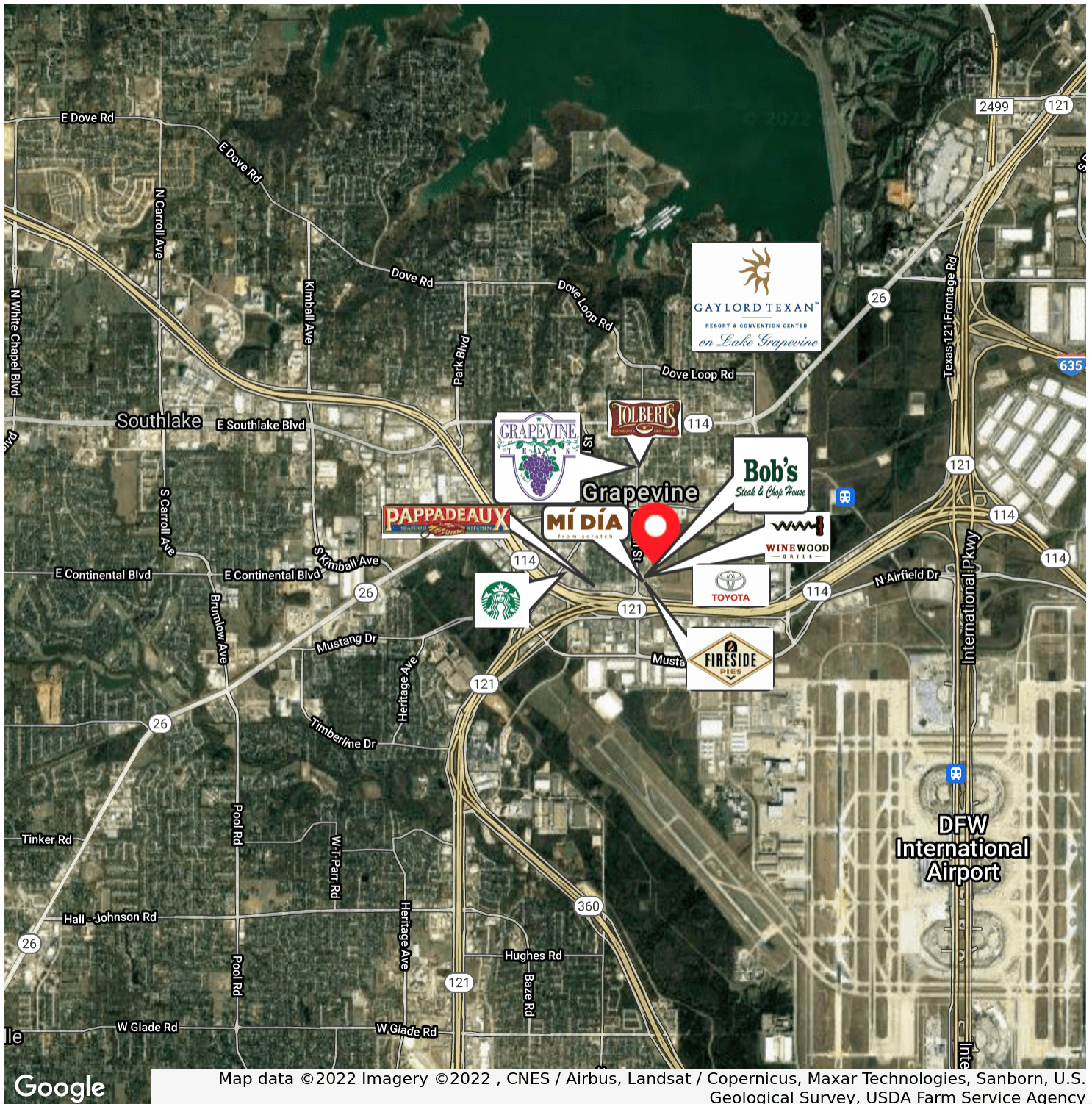




For Lease

1301 MUNICIPAL WAY

Grapevine, TX 76051



Presented by

Cincha Kostman

Kostman@HudsonPeters.com

214.389.3665

Elizabeth Ocando, CCIM

ocando@hudsonpeters.com

214.389.3666



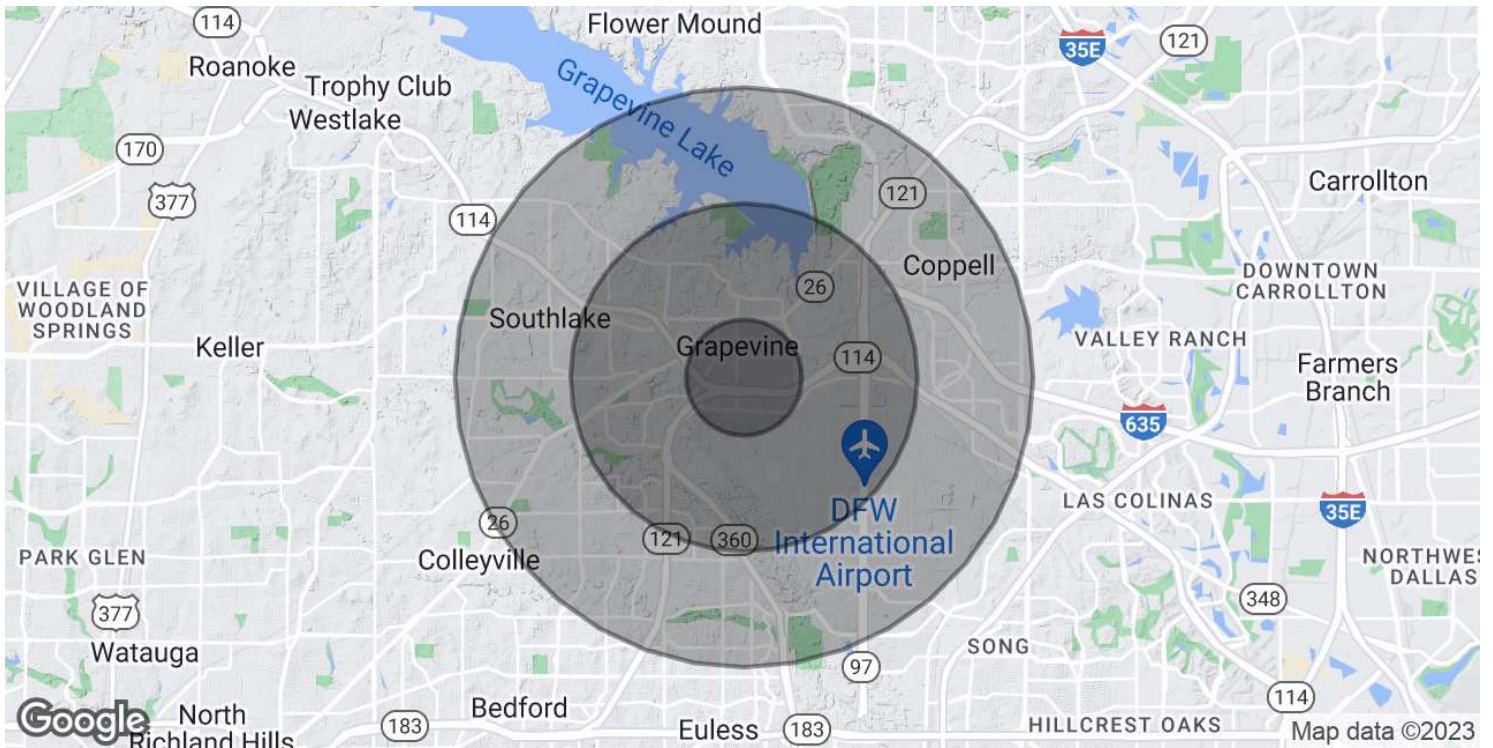
The information contained herein was obtained from sources believed reliable; however, Hudson Peters Commercial LLC makes no guarantees, warranties or representation as to the completeness or accuracy thereof. The presentation of properties and pricing is submitted subject to errors, omissions, change of price or condition prior to sale or lease or withdrawal without notice. Unless expressly stated otherwise, nothing contained in this message should be construed as a digital or electronic signature, nor is it intended to reflect an intention to make an agreement by electronic means.



For Lease

1301 MUNICIPAL WAY

Grapevine, TX 76051



#### POPULATION

#### 1 MILE

#### 3 MILES

#### 5 MILES

Total Population	2,511	34,328	106,871
Average Age	35.2	35.7	37.5
Average Age (Male)	31.0	35.3	37.7
Average Age (Female)	36.5	35.8	37.1

#### HOUSEHOLDS & INCOME

#### 1 MILE

#### 3 MILES

#### 5 MILES

Total Households	951	13,163	41,454
# of Persons per HH	2.6	2.6	2.6
Average HH Income	\$60,712	\$85,750	\$110,566
Average House Value	\$172,075	\$225,609	\$273,427

\* Demographic data derived from 2020 ACS - US Census

Presented by

Cincha Kostman

Kostman@HudsonPeters.com

214.389.3665

Elizabeth Ocando, CCIM

ocando@hudsonpeters.com

214.389.3666



The information contained herein was obtained from sources believed reliable; however, Hudson Peters Commercial LLC makes no guarantees, warranties or representation as to the completeness or accuracy thereof. The presentation of properties and pricing is submitted subject to errors, omissions, change of price or condition prior to sale or lease or withdrawal without notice. Unless expressly stated otherwise, nothing contained in this message should be construed as a digital or electronic signature, nor is it intended to reflect an intention to make an agreement by electronic means.



## Information About Brokerage Services

*Texas law requires all real estate licensees to give the following information about brokerage services to prospective buyers, tenants, sellers and landlords.*

### TYPES OF REAL ESTATE LICENSE HOLDERS:

- **A BROKER** is responsible for all brokerage activities, including acts performed by sales agents sponsored by the broker.
- **A SALES AGENT** must be sponsored by a broker and works with clients on behalf of the broker.

### A BROKER'S MINIMUM DUTIES REQUIRED BY LAW (A client is the person or party that the broker represents):

- Put the interests of the client above all others, including the broker's own interests;
- Inform the client of any material information about the property or transaction received by the broker;
- Answer the client's questions and present any offer to or counter-offer from the client; and
- Treat all parties to a real estate transaction honestly and fairly.

### A LICENSE HOLDER CAN REPRESENT A PARTY IN A REAL ESTATE TRANSACTION:

**AS AGENT FOR OWNER (SELLER/LANDLORD):** The broker becomes the property owner's agent through an agreement with the owner, usually in a written listing to sell or property management agreement. An owner's agent must perform the broker's minimum duties above and must inform the owner of any material information about the property or transaction known by the agent, including information disclosed to the agent or subagent by the buyer or buyer's agent.

**AS AGENT FOR BUYER/TENANT:** The broker becomes the buyer/tenant's agent by agreeing to represent the buyer, usually through a written representation agreement. A buyer's agent must perform the broker's minimum duties above and must inform the buyer of any material information about the property or transaction known by the agent, including information disclosed to the agent by the seller or seller's agent.

**AS AGENT FOR BOTH - INTERMEDIARY:** To act as an intermediary between the parties the broker must first obtain the written agreement of each party to the transaction. The written agreement must state who will pay the broker and, in conspicuous bold or underlined print, set forth the broker's obligations as an intermediary. A broker who acts as an intermediary:

- Must treat all parties to the transaction impartially and fairly;
- May, with the parties' written consent, appoint a different license holder associated with the broker to each party (owner and buyer) to communicate with, provide opinions and advice to, and carry out the instructions of each party to the transaction.
- Must not, unless specifically authorized in writing to do so by the party, disclose:
  - that the owner will accept a price less than the written asking price;
  - that the buyer/tenant will pay a price greater than the price submitted in a written offer; and
  - any coincidental information or any other information that a party specifically instructs the broker in writing not to disclose, unless required to do so by law.

**AS SUBAGENT:** A license holder acts as a subagent when aiding a buyer in a transaction without an agreement to represent the buyer. A subagent can assist the buyer but does not represent the buyer and must place the interests of the owner first.

### TO AVOID DISPUTES, ALL AGREEMENTS BETWEEN YOU AND A BROKER SHOULD BE IN WRITING AND CLEARLY ESTABLISH:

- The broker's duties and responsibilities to you, and your obligations under the representation agreement.
- Who will pay the broker for services provided to you, when payment will be made and how the payment will be calculated.

**LICENSE HOLDER CONTACT INFORMATION:** This notice is being provided for information purposes. It does not create an obligation for you to use the broker's services. Please acknowledge receipt of this notice below and retain a copy for your records.

<b>Hudson Peters Commercial, LLC</b>	<b>582122</b>	<b>hudson@hudsonpeters.com</b>	<b>(972)980-1188</b>
Licensed Broker /Broker Firm Name or Primary Assumed Business Name	License No.	Email	Phone
<b>Lynn Michelle Hudson</b>	<b>433516</b>	<b>hudson@hudsonpeters.com</b>	<b>(972)980-1188</b>
Designated Broker of Firm	License No.	Email	Phone
Licensed Supervisor of Sales Agent/ Associate	License No.	Email	Phone
Sales Agent/Associate's Name	License No.	Email	Phone
Buyer/Tenant/Seller/Landlord Initials		Date	

Regulated by the Texas Real Estate Commission

Information available at [www.trec.texas.gov](http://www.trec.texas.gov)  
IABS 1-0